



Local 632 Swag Catalog

I.A.T.S.E., Local 632

*Proudly serving Bergen, Passaic, Morris, Warren, Hunterdon,
Sussex, Hudson, & Essex Counties since 1926.*



Regular



Backstage Approved



Metallic

Here is a basic catalogue of the items available for order. Please take a look. If you can't find exactly what you want, let me know. I might be able to work with you to find what you are looking for. If you have any special requests, just ask. Some special pricing might apply, but I will do what I can to get the items you want.




Golden Bug

David "Squeege" Weigant
(316) 285-9489
la632_swag@soundsqueege.com
329 Broad Street, Apt 2
Carlstadt, NJ 07072

Stickers	1
T-Shirts	2
Polo Shirts	7
Turtleneck	11
Dickies Shirts	12
Dickies Shorts	15
Dickies Pants	16
Sweat Shirts	18
Sweat Pants	21
Fleece Outer Wear	22
Glacier Soft Shell	27
Challenger Jacket	29
Denim Jacket	30
Leather Bomber Jacket	31
Letterman Jacket	32
Retro Camp Shirt	33
Robe	34
Scarf	35
Hats	36
Bags	38
Apron	41
Embroidery Options	42

Union Decals and Bumper Stickers \$0.50 ea.

Union Stagehand (2.5"x9.25") 	Standing Tall (3"x11") 	Freedom Ring (3"x11") 
United We Stand (3"x11") 	Defend Freedom (3"x11") 	Proud American 
Union Quality (3"x11") 	American Quality (2.5"x9.25") 	Solidarity (3"x11") 
Birth... Choice (2.5"x9.25") 	Weekends... (2.5"x9.25") 	Union Wages (2.5"x9.25") 
Work Union (2.5"x9.25") 	Voice (2.5"x9.25") 	Divided We Beg (2.5"x9.25") 
Union Pride USA (3"x11") 	Eagle Flag (2.5"x3") 	Divided We Fall (2.5"x3") 
Union Pride Eagle (2.5" Round) 	Pride Cross (2.25"x2.25") 	We Can Make a Difference (2.5" Round) 
Union Power (2.5" Round) 	Bull Dog (2.5" Round) 	Divided We Beg (2.5" Round) 

	<p>3" Round Local 632 Bug, available with:</p> <ul style="list-style-type: none"> White Background, \$1.50 Clear Background (Back Adhesive) , \$1.50 Clear Background (Front Adhesive) , \$1.50 Window Cling (Back) , \$1.75 Window Cling (Front) , \$1.75 <p>Minimum run of 250 from the print shop.</p>
-------------------------------------------------------------------------------------	--------------------------------------------------------------------------------------------------------------------------------------------------------------------------------------------------------------------------------------------------------------------------------------------------------------------------------------------------------------



**STYLE# 2905
UNION MADE TEE**

**SIZES: S-4XL
Union Made in USA**



Key Features:

- 6.1 Oz. High quality heavy weight fabric
- 100% pre-shrunk cotton
- Open-end yarn
- Full cut specs
- Taped shoulder to shoulder
- Two needle sleeve and bottom hem

Care Instructions:

Machine wash cold with like colors. Only non-chlorine bleach when needed. Tumble dry low. Cool iron if needed.



(DISCLAIMER) Due to the Molecular Structure of the Lime Green Color fading will rapidly occur when exposed to sunlight, heat, body perspiration, heat while screen printing, washing, drying, wash inside out, do not use bleach, do not tumble dry, do not dry clean, Only Line Dry. For Longer Life try Bayside's Best. THIS DISCLAIMER APPLIES TO ALL STYLES.

Reference Catalog Page: #16

Bayside Product Specifications:

	S	M	L	XL	2XL	3XL	4XL
WIDTH (1" Below Armhole)	18	20	22	24	26	28	30
LENGTH (From High Point Shoulder)	27	28	30	31	32	33	34





**STYLE# 3015
UNION MADE POCKET TEE**

**SIZES: S-4XL
Union Made in USA**

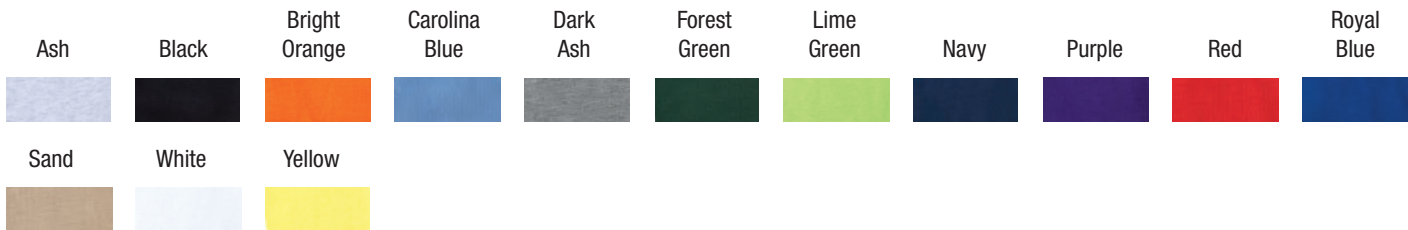


Key Features:

- 6.1 Oz. High quality heavy weight fabric
- 100% pre-shrunk cotton
- Open-end yarn
- Full cut specs
- Taped shoulder to shoulder
- Two needle sleeve and bottom hem

Care Instructions:

Machine wash cold with like colors. Only non-chlorine bleach when needed. Tumble dry low. Cool iron if needed.



(DISCLAIMER) Due to the Molecular Structure of the Lime Green Color fading will rapidly occur when exposed to sunlight, heat, body perspiration, heat while screen printing, washing, drying, wash inside out, do not use bleach, do not tumble dry, do not dry clean, Only Line Dry. For Longer Life try Bayside's Best. THIS DISCLAIMER APPLIES TO ALL STYLES.

Reference Catalog Page: #17

Bayside Product Specifications:

	S	M	L	XL	2XL	3XL	4XL
WIDTH (1" Below Armhole)	18	20	22	24	26	28	30
LENGTH (From High Point Shoulder)	27	28	30	31	32	33	34





BAYSIDETM
Apparel & Headwear
MADE IN THE USA



**STYLE# 2955
UNION MADE LONGSLEEVE TEE**

**SIZES: S-4XL
Union Made in USA**

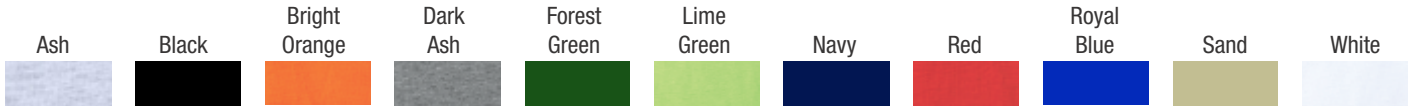


Key Features:

- 6.1 Oz. High quality heavy weight fabric
- 100% pre-shrunk cotton
- Open-end yarn
- Full cut specs
- Taped shoulder to shoulder
- Two needle bottom hem

Care Instructions:

Machine wash cold with like colors. Only non-chlorine bleach when needed. Tumble dry low. Cool iron if needed.



(DISCLAIMER) Due to the Molecular Structure of the Lime Green Color fading will rapidly occur when exposed to sunlight, heat, body perspiration, heat while screen printing, washing, drying, wash inside out, do not use bleach, do not tumble dry, do not dry clean, Only Line Dry. For Longer Life try Bayside's Best. THIS DISCLAIMER APPLIES TO ALL STYLES.

Reference Catalog Page: #18

Bayside Product Specifications:

	S	M	L	XL	2XL	3XL	4XL
WIDTH (1" Below Armhole)	18	20	22	24	26	28	30
LENGTH (From High Point Shoulder)	27	28	30	31	32	33	34





BAYSIDE
Apparel & Headwear
MADE IN THE USA



STYLE# 3055
UNION MADE POCKET LONGSLEEVE TEE

SIZES: S-4XL
Union Made in USA

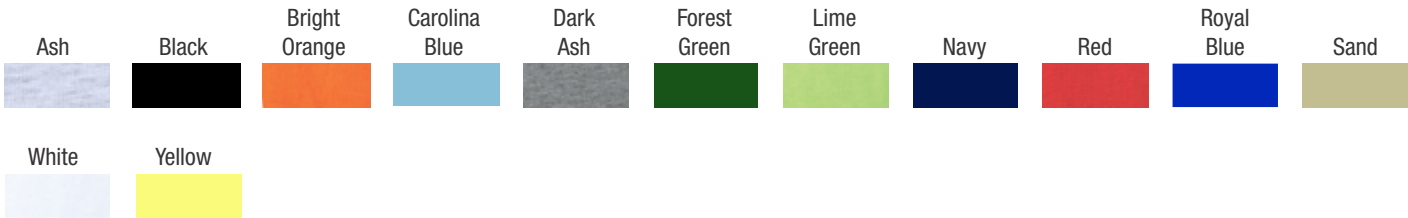


Key Features:

- 6.1 Oz. High quality heavy weight fabric
- 100% pre-shrunk cotton
- Open-end yarn
- Full cut specs
- Taped shoulder to shoulder
- Two needle bottom hem

Care Instructions:

Machine wash cold with like colors. Only non-chlorine bleach when needed. Tumble dry low. Cool iron if needed.



(DISCLAIMER) Due to the Molecular Structure of the Lime Green Color fading will rapidly occur when exposed to sunlight, heat, body perspiration, heat while screen printing, washing, drying, wash inside out, do not use bleach, do not tumble dry, do not dry clean, Only Line Dry. For Longer Life try Bayside's Best. THIS DISCLAIMER APPLIES TO ALL STYLES.

Reference Catalog Page: #19

Bayside Product Specifications:

	S	M	L	XL	2XL	3XL	4XL
WIDTH (1" below armhole)	18	20	22	24	26	28	30
LENGTH (From high point shoulder)	26	28	30	31	32	33	34





BAYSIDE[®]
Apparel & Headwear
MADE IN THE USA



**STYLE# 3075
UNION MADE WOMENS BASIC TEE**

**SIZES: XS-3XL
Made in USA**



Key Features:

- 6.1 Oz. High quality heavy weight fabric
- 100% pre-shrunk cotton
- Open-end yarn
- Full cut specs
- Two needle sleeve and bottom hem
- Taped shoulder to shoulder

Care Instructions:

Machine wash cold with like colors. Only non-chlorine bleach when needed. Tumble dry low. Cool iron if needed.



Bayside Product Specifications:

	XS	S	M	L	XL	2XL	3XL
WIDTH (1" Below Armhole)	17	18	20	22	24	26	28
LENGTH (From High Point Shoulder)	24	25	26	27	28	29.5	31





**STYLE# 1000
MEN'S POLO SHIRT**

**SIZES: S-4XL
Made in USA**



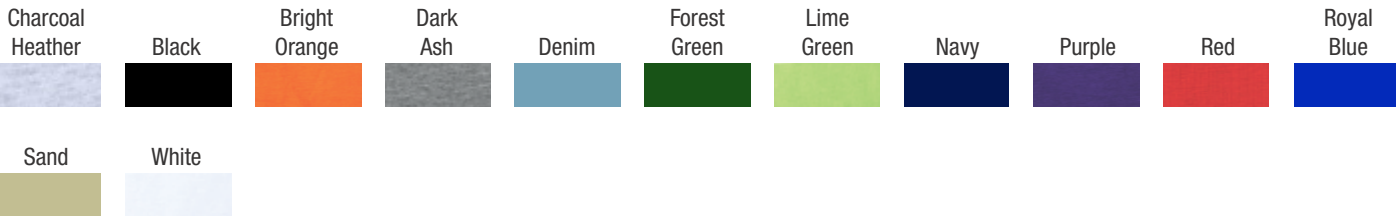
Coordinate: Women's Polo Style #: 1050

Key Features:

- 6.2 Oz. Pre-shrunk fabric
- 100% combed cotton pique classic polo shirt
- 3 wood-tone buttons
- 1x1 rib knit cuffs
- Side seam design for shape retention.

Care Instructions:

Machine wash cold with like colors. Only non-chlorine bleach when needed. Tumble dry low. Cool iron if needed.



Reference Catalog Page: #4

Bayside Product Specifications:

	S	M	L	XL	2XL	3XL	4XL
WIDTH (1" Below Armhole)	18	20	22	24	26	28	30
LENGTH (From High Point Shoulder)	27	28	29	30	31	32	33





BAYSIDE[®]
Apparel & Headwear
MADE IN THE USA



**STYLE# 1050
WOMEN'S V-NECK POLO SHIRT**

**SIZES: XS-2XL
Made in USA**



Coordinate: Mens Polo Shirts Style #: 1000

Key Features:

- 6.2 Oz. Pre-shrunk fabric
- 100% combed cotton pique classic polo shirt with johnny collar
- 1x1 rib knit cuffs
- Side seam design for shape retention.

Care Instructions:

Machine wash cold with like colors. Only non-chlorine bleach when needed. Tumble dry low. Cool iron if needed.



Reference Catalog Page: #5

Bayside Product Specifications:

	S	M	L	XL	2XL
WIDTH (1" Below Armhole)	17	18	19	20	21
LENGTH (From High Point Shoulder)	22.5	23.5	24.5	25.5	26.5



Pocketed Polo Shirt



Colors



Black



Heather Grey



Navy



White

- Anvil 6.5 oz. Piqué Pocket Sport Shirt**
- 100% preshrunk ringspun extra heavyweight cotton
 - soft fashion knit contoured collar and welt cuffs
 - three-button clean-finish placket
 - Heather Grey is 90% cotton, 10% polyester
 - double-needle stitching on bottom hem
 - high-gloss woodtone buttons
 - five-point left-chest pocket

Size	M	L	XL	2XL	3XL
Length	29	30	31	32	33
Width	21	23	25	27	29
Sleeve Length	9	9.5	10	10.5	11

Long Sleeve Polo Shirt



Colors



Black



Sport Grey



Navy



White



Red

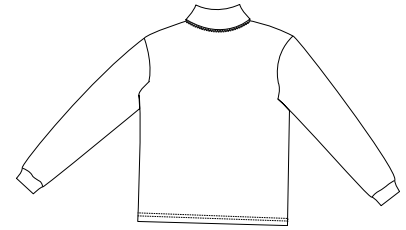
Gildan 6.5 oz. Ultra Cotton® Ringspun Piqué Long-Sleeve Polo

- 100% ringspun cotton
- three-button placket with woodtone buttons
- welt-knit collar
- double-needle stitching throughout
- spandex reinforced cuffs

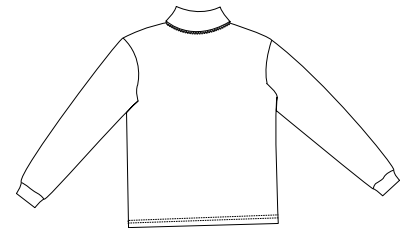
Size	M	L	XL	2XL	3XL
Length	29	30	31	32	33
Width	21	23	25	27	29
Sleeve Length	9	9.5	10	10.5	11

Interlock Knit Turtleneck

PORT AUTHORITY®



Front



Back

K322

- * 6.3-ounce * 100% ring spun combed cotton * Coverseamed
- * Spandex in collar and cuffs * Double-needle collar and bottom hem

Care Instructions:

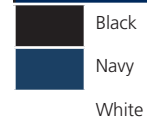
Machine wash cold with like colors.
Do not bleach.
Tumble dry low.
Warm iron if necessary.

Finished Measurements in Inches

Size	XS	S	M	L	XL	2XL	3XL	4XL
Chest	19.5	21	22.5	24	25.5	27	28.5	30
Body	28.5	29	29.5	30	30.5	32	32.5	33
Sleeve	23	24	25	26	27	28	29	30
Collar	6.5	6.5	7	7	7.5	7.5	8	8
Collar Hight	5	5	5	5	5	5	5	5

Chest width measured 1" below arm hole. Body length measured from center back neck seam to hem.
Sleeve length measured from shoulder seam to hem. Collar measured seam to seam. Collar hight measured unfolded.

Colors



Please Note:

Colors shown are approximate and for reference only. For closest match see PMS colors, or for exact match, returnable samples and grommited samples are available.

Color Chart

Colors	Black	Navy	White
Textile PMS	19-4203TC	19-3921TC	11-0601TC
General PMS	Process Black	533C	No Match

Short-Sleeve Work Shirt



Colors



Black



Charcoal



Dark Navy



Graphite Grey



Khaki



Light Blue



White

Dickies Men's 4.25 oz. Premium Industrial Short-Sleeve Work Shirt

- 65% polyester, 35% cotton
- E-Z touch fabric extends life, up to 50 industrial washings
- lined two-piece collar with permanent stays
- two chest pockets, left pocket with pencil division
- reinforced button placket; logo on bottom of front placket
- Visa® finish for stain-, wrinkle- & fade-resistance & wicking

Size	S	M	L	XL	2XL	3XL
Body Length	30.5	31.5	32	33	33.5	33.5
Body Width	41.5	45.5	49.5	53.5	56.5	59.5
Neck Size	14.75	15.75	16.75	17.75	18.75	19.75
Sleeve Length	9	9.13	9.25	9.38	9.5	9.63

Long-Sleeve Work Shirt



Colors



Black



Charcoal



Dark Navy



Khaki



Silver Grey

Dickies Men's 5.25 oz. Long-Sleeve Work Shirt

- 65% polyester, 35% cotton
- Visa® moisture-wicking and stain-release finish
- generous fit across shoulders
- long-sleeves, extra-long tail and 20-line melamine buttons
- two chest pockets and two-button cuffs for a custom fit
- Dickies logo patch at bottom of placket
- shirt colors match Dickies traditional work pants

Size	S	M	L	XL	2XL	3XL
Body Length	31.38	32.63	33.63	34.63	36.13	37.13
Body Width	41.5	45.5	49.5	53.5	57.5	61.5
Full Body Length	30.38	31.63	32.63	33.63	35.13	36.13
Sleeve Length	33.5	33.23	34.5	35.5	36.5	36.5

Ladies Work Shirt



Colors



Black



Dark Navy



Pink



White

Dickies Ladies' 5 oz. Classic Stretch Poplin

- 5 oz., 65/35 poly/cotton mechanical stretch poplin.
- Tailored fit. Wrinkle-resistant. Stain-release finish.
- Dyed-to-match buttons.
- Spread collar with collar stays.
- Longer length in back stays tucked in.
- Darts in front, princess seams in back.
- Moisture management finish.
- Industrial laundry friendly.
- Screenprinted tag on inside neck.
- Dickies logo on the bottom of front placket.

Size	S	M	L	XL	2XL
------	---	---	---	----	-----

Also available in long sleeve!

11" Cargo Shorts



Colors

Black
Charcoal
Khaki
Dark Navy

Dickies 11" Industrial Cargo Short, Item# LR542

- Relaxed fit
- Two roomy cargo pockets with hidden zip closer and stitched down flaps
- Wide reinforced belt loops
- Enhanced durability extends garment life
- Crotch gusset
- E-Z Touch StayDark Technology
- 11" Inseam

Sizes:

28, 29, 30, 31, 32, 33, 34, 35, 36, 38, 40, 42, 44, 46, 48, 50

Industrial Cargo Pants



Colors

Black

Navy

Khaki

Charcoal

Dickies Industrial Cargo Pant, Item# 2112372

- Relaxed fit
- Two roomy cargo pockets with hidden zip closure
- Wide Belt loops
- Stitched down flaps
- Interior cell phone pocket in right pocket
- Reinforced front pockets
- Enhanced durability extend garment life and reduces repairs
- E-Z Touch, Stay Dark Technology
- Permanent press finish

Sizes :

30-30, 30-32, 30-34, 32-30, 32-32, 32-34, 34-30, 34-32, 34-34, 36-30, 36-32, 36-34, 38-30, 38-32, 38-34, 40-30, 40-32, 40-34, 42-30, 42-32, 42-34

(Unhemmed):

28-37, 29-37, 30-39, 31-39, 32-39, 33-39, 34-39, 35-39, 36-39, 38-39, 40-37, 42-37, 44-37, 46-37, 48-37, 50-37, 52-37, 54-37, 56-37, 58-37, 60-37

EMT Pants



Colors

Black
Dark Navy



Dickies EMT Pants, Item# 2112377

- Relaxed fit
- Triple grip waistband
- Reinforced double knee
- E-Z Touch, StayDark Technology
- Cargo pockets and tool pocket with snap loops

Sizes: (unhemmed)

28x37, 29x37, 30x39, 31x39, 32x39, 33x39, 34x39, 35x39,
36x39, 38x39, 40x37, 42x37, 44x37, 46x37, 48x37, 50x37,
52x37, 54x37, 56x37



**STYLE# 1102
CREWNECK FLEECE**

**SIZES: S-6XL
Made in USA**

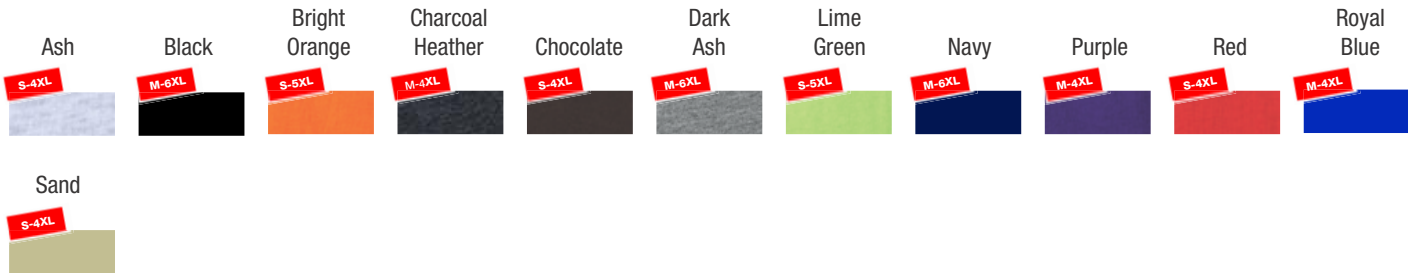


Key Features:

- 9.5 Oz. High quality heavy weight pre-shrunk fabric
- 80% cotton 20% polyester crewneck sweatshirt
- Set in sleeve with lycra in cuff, neck and band
- Cover stitch around neck, shoulder, armhole, cuff and band

Care Instructions:

Machine wash cold with like colors. Only non-chlorine bleach when needed. Tumble dry low. Cool iron if needed.



Reference Catalog Page: #30

Bayside Product Specifications:

	S	M	L	XL	2XL	3XL	4XL	5XL	6XL
WIDTH (1" Below Armhole)	20	22	24	26	28	30	32	34	36
LENGTH (From High Point Shoulder)	26	28	30	31	32	33	34	35	36

18





STYLE# 900
FULL ZIP FLEECE WITH HOOD

SIZES: S-4XL
Made in USA

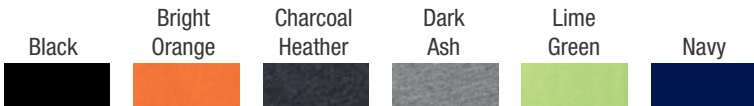


Key Features:

- 9.5 Oz. High quality heavy weight pre-shrunk fabric
- 80% cotton 20% polyester full zipper hooded sweatshirt
- Lycra in cuff and band
- Front muff pocket with matching drawstrings on double lined hood

Care Instructions:

Machine wash cold with like colors. Only non-chlorine bleach when needed. Tumble dry low. Cool iron if needed.



Reference Catalog Page: #32

Bayside Product Specifications:

	S	M	L	XL	2XL	3XL	4XL
WIDTH (1" Below Armhole)	20	22	24	26	28	30	32
LENGTH (From High Point Shoulder)	26	28	30	31	32	33	34





STYLE# 960
HOODED PULLOVER FLEECE

SIZES: S-6XL
Made in USA

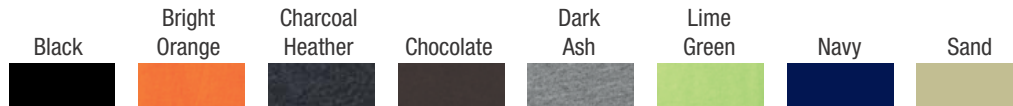


Key Features:

- 9.5 Oz. High quality heavy weight pre-shrunk fabric
- 80% cotton 20% polyester hooded sweatshirt
- Lycra in cuff and band with front muff pocket and matching drawstrings on double lined hood

Care Instructions:

Machine wash cold with like colors. Only non-chlorine bleach when needed. Tumble dry low. Cool iron if needed.



Reference Catalog Page: #33

Bayside Product Specifications:

	S	M	L	XL	2XL	3XL	4XL	5XL	6XL
WIDTH (1" Below Armhole)	20	22	24	26	28	30	32	34	36
LENGTH (From High Point Shoulder)	26	28	30	31	32	33	34	35	36

20



Sweatpants



Black



Light Steel

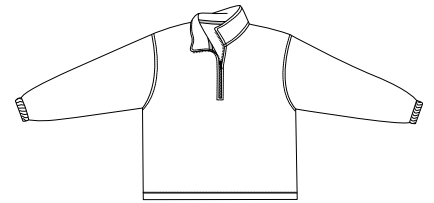
Hanes 7.8-ounce, 50/50 cotton/poly made with low-pill Air Jet Yarn

- PrintPro[®] XP fleece with high-stitch density for superior embellishment
- Four-needle elastic waistband
- Dyed-to-match drawcord
- Improved fit with differentiating front and back rise

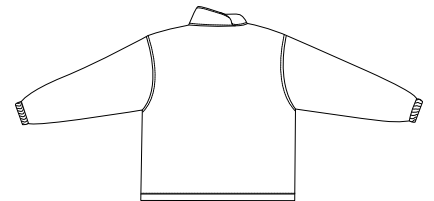
Size	S	M	L	XL	2XL	3XL
Waist	13	14	16	17.5	19	20.5
Inseam	31.5	32	32	32	32	32

R-Tek™ Fleece 1/4 Zip Pullover

PORT AUTHORITY®



Front



Back

JP78

- * 13-ounce * 100% filament polyester R-Tek™ * Twill-trimmed neck
- * Lycra-trimmed cuffs * Locker patch

Care Instructions:






Machine wash warm. Wash inside out with like colors. Line dry. Do not bleach. Do not iron. Do not dry clean.

Finished Measurements in Inches

Size	XS	S	M	L	XL	2XL	3XL	4XL
Length	25	26	27	28	29	30	30.5	31
Chest	22	23.5	25	26.5	28	29.5	31	32.5
Sleeve	32	34	36	37.5	38	38.5	39	39.5
Collar Height	2.75	2.75	2.75	2.75	2.75	2.75	2.75	2.75
Areas for Decoration	Left/Right Chest, Full Back		Port Pocket™		NA			

Collar measured center back seam to top hem. Chest width measured 1" below arm hole. Body length measured from back neck seam to hem. Sleeve length measured from center back seam to hem.

Colors

	Black
	Gray Heather
	Midnight Heather
	Navy
	Red

Please Note:

Colors shown are approximate and for reference only. For closest match see PMS colors, or for exact match, returnable samples and grommeted samples are available.

Color Chart

Fleece Color	Black	Grey Heather	Midnight Heather	Navy	Red
Textile PMS	19-4006TC	No Match	No Match	19-3920TC	N/A
General PMS	Process Black	No Match	No Match	533C	1955C



**STYLE# 1120
FULL ZIP FLEECE VEST**



**SIZES: S-4XL
Made in USA**

Key Features:

- 14.5 Oz. premium anti-piling fleece
- 100% spun polyester
- Full zip front
- Adjustable pull-cord and cord lock waistband
- Lycra bound arm holes
- Two side seam pockets

Care Instructions:

Machine wash cold with like colors. Only non-chlorine bleach when needed. Tumble dry low. Cool iron if needed.



Reference Catalog Page: #30

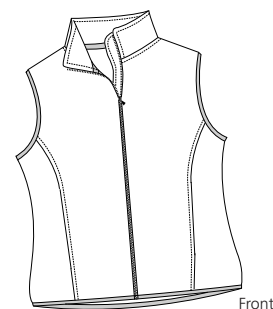
Bayside Product Specifications:

	S	M	L	XL	2XL	3XL	4XL
WIDTH (1" Below Armhole)	22	23	25	26	27	28	29
LENGTH (From High Point Shoulder)	24	25	26	27	28	29	30

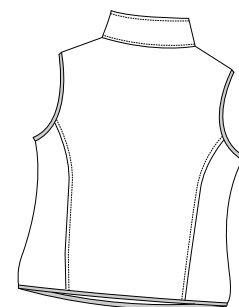


Ladies R-Tek™ Fleece Vest

PORT | AUTHORITY®



Front



Back

LP79

- * 13-ounce * 100% filament polyester R-Tek™ fleece * Twill taping inside the neck
- * Armholes and waistband trimmed in Lycra * Zip-close pockets * Princess seams

Care Instructions:



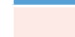



Machine wash warm, inside out with like colors. Line dry. Do not bleach. Do not iron. Do not dry clean.

Finished Measurements in Inches

Size	XS	S	M	L	XL	XXL	Plus 1X	Plus 2X
Width	18.5	19.5	20.5	22.5	24	25.25	26.5	29
Length	22.5	23.5	24.5	25.5	26.5	27	27.5	28
Sleeve	31	33.5	35	36	37	38	38.5	39
Collar Ht	2.75	2.75	2.75	2.75	2.75	2.75	2.75	2.75
Zipper	25	26	27	28	29	30	30.5	31

Width measured 1" below armhole. Length measured from center back neck seam to bottom hem. Sleeve measured from center back neck seam to cuff. Zipper measured by complete length.

Colors

	Black
	Light Blue
	Light Pink
	Midnight Heather
	Navy
	Raspberry

Please Note:

Colors shown are approximate and for reference only. For closest match see PMS colors, or for exact match, returnable samples and grommated samples are available.

Color Chart

Colors	Black	Light Blue	Light Pink	Midnight Heather	Navy	Raspberry
Textile PMS	19-4006TC	16-4020TC	12-1310TC	No Match	19-3920TC	17-1723TC
General PMS	Process Black	542C	705C	No Match	533C	7433C



STYLE# 1130
FULL ZIP FLEECE JACKET



SIZES: S-4XL
Made in USA

Key Features:

- 14.5 Oz. premium anti-piling fleece
- 100% spun polyester
- Full zip front
- Adjustable pull-cord and cord lock waistband
- Elastic cuffs
- Two side seam pockets

Care Instructions:

Machine wash cold with like colors. Only non-chlorine bleach when needed. Tumble dry low. Cool iron if needed.



Reference Catalog Page: #34

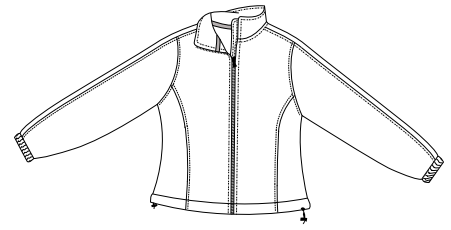
Bayside Product Specifications:

	S	M	L	XL	2XL	3XL	4XL
WIDTH (1" Below Armhole)	23	24	25	27	29	30	31
LENGTH (From High Point Shoulder)	26	27	28	29	30	31	32

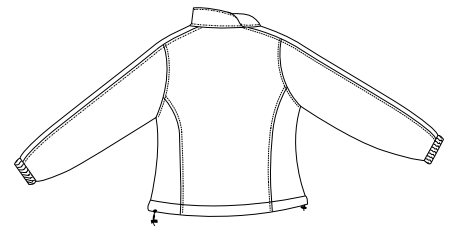


Ladies R-Tek™ Fleece Full Zip Jacket

PORT | AUTHORITY®



Front



Back

LP77

- * 13-ounce * 100% filament polyester R-Tek™ fleece * Twill-trimmed neck
- * Elastic cuffs and waistband * Princess seams * Front seam zip close pockets

Care Instructions:

Machine wash warm. Wash inside out with like colors. Line dry. Do not bleach. Do not iron. Do not dry clean.

Finished Measurements in Inches

Size	XS	S	M	L	XL	XXL	Plus 1X	Plus 2X
Width	18.5	19.5	20.5	22.5	24	25.25	26.5	29
Length	22.5	23.5	24.5	25.5	26.5	27	27.5	28.5
Sleeve	31.5	32.5	33.5	34.5	35.5	36	36.5	37
Collar Ht	2.75	2.75	2.75	2.75	2.75	2.75	2.75	2.75
Pocket Ht	6.5	6.5	7	7	7.5	7.5	7.5	7.5

Width measured 1" below armhole. Length measured from center back neck seam to bottom hem.
Sleeve measured from center back neck seam to cuff.

Colors

	Black
	Lavender
	Light Blue
	Light Pink
	Midnight Heather
	Navy
	Raspberry

Please Note:

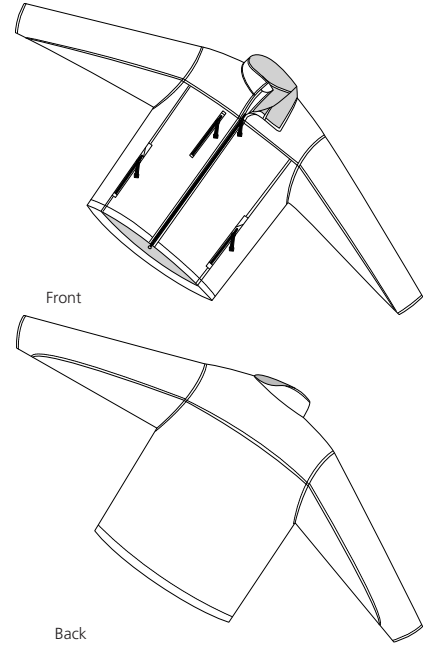
Colors shown are approximate and for reference only. For closest match see PMS colors, or for exact match, returnable samples and grommited samples are available.

Color Chart

Colors	Black	Lavender	Light Blue	Light Pink	Midnight Heather	Navy	Raspberry
Textile PMS	19-4006TC	17-3924TC	16-4020TC	12-1310TC	No Match	19-3920TC	17-1723TC
General PMS	Process Black	5285C	542C	705C	No Match	533C	7433C

Glacier Soft Shell Jacket

PORT AUTHORITY®



J790

- * 100% Polyester stretch woven shell fabric bonded to 100% Polyester Microfleece with a laminated film insert
- * Wind and water resistant * Front and chest zippered pockets
- * Open bottom hem * Lycra-trimmed cuffs

Care Instructions:

Machine wash cold.
Do not dry clean, do not iron.
Do not bleach, do not tumble dry.

Finished Measurements in Inches

Size	XS	S	M	L	XL	2XL	3XL	4XL
Length	27	27.5	28	29	30	31	31.5	32
Chest	20.5	22	24	25.5	27	28.5	30	31.5
Sleeve	31	33	35	36	37	37.5	38	38.5
Collar Ht	3	3	3	3	3	3	3	3
Chest Pkt	6	6	6	6.5	6.5	6.5	6.5	6.5
Areas for Decoration	Left Chest		Port Pocket™		NA			

Collar measured center back seam to top hem, Chest width 1" below arm hole, Side pocket from top to bottom of opening, Body length from back neck seam to hem, Sleeve length from center back seam to hem

Colors

	Atlantic Blue/Chrome
	Black/Chrome
	Olive/Chrome

Please Note:

Colors shown are approximate and for reference only. For closest match see PMS colors, or for exact match, returnable samples and grommeted samples are available.

Color Chart

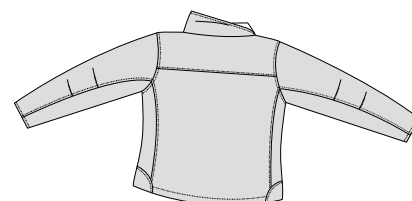
Jacket Colors	Atlantic Blue	Black	Olive
Textile PMS	18-4215TC	19-4006TC	18-0513TC
General PMS	7545C	Process Black	417C
Accent Colors	Chrome		
Textile PMS	16-4404TPX		
General PMS	Cool Grey 7C		

Ladies Glacier Soft Shell Jacket

PORT AUTHORITY®



Front



Back

L790

- * 100% Polyester stretch woven shell fabric bonded to 100% Polyester Microfleece
- * Laminated film insert * Wind and water resistant * Front zippered pockets
- * Chest zippered pockets * Open bottom hem * Lycra-trimmed cuffs * Princess cut

Care Instructions:

Machine wash cold. Do not dry clean.
Do not Iron. Do not Bleach. Do not
tumble dry.

Finished Measurements in Inches

Size	XS	S	M	L	XL	XXL	Plus 1X	Plus 2X
Length	22.5	23.5	24.5	25.5	26.5	27.5	28.5	29.5
Chest	19	20	21	22.5	24	25.5	28	30.5
Sleeve	30	31	32	33	34	35	35.5	36.5
Sweep	18.5	18.5	20.5	22	23.5	25	27.5	30
Areas for Decoration	L/R Chest		Port Pocket™					

Chest width measured 1" below arm hole. Body length measured from back neck seam to hem.
Sleeve length measured from center back seam to hem.

Colors

	Atlantic Blue/Chrome
	Black/Chrome
	Olive/Chrome

Please Note:

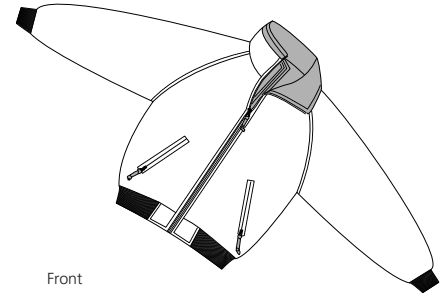
Colors shown are approximate and for reference only. For closest match see PMS colors, or for exact match, returnable samples and grommeted samples are available.

Color Chart

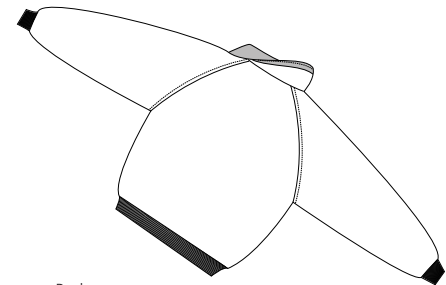
Jacket Colors	Atlantic Blue	Black	Olive
Textile PMS	18-4215TC	19-4006TC	18-0513TC
General PMS	7545C	Process Black	417C
Accent Color	Chrome		
Textile PMS	16-4404TPX		
General PMS	Cool Grey 7C		

Challenger Jacket

PORT AUTHORITY®



Front



Back

J754

- * Durable Teklon Nylon shell * Poly filled body w/ heavyweight fleece lining
- * Nylon-lined sleeves for easy on/off * 1 x 1 rib knit trim at waistband and cuffs
- * Lower slash pockets and two inside chest pockets w/ zip closures
- * Port Pocket™ for easy access to left chest & full back embroidery

Care Instructions:

Machine wash cold, gentle cycle.
Tumble dry low.
Cool iron if needed.
Do not bleach.

Colors

	Goldenrod**/ True Navy		True Hunter/ True Navy*
	Khaki/ True Black		True Navy/ Grey Heather*
	Maroon/ True Black		True Navy/ True Navy
	True Black/ Grey Heather		True Red/ True Navy
	True Black/ True Black*		True Royal/ True Navy

Please Note:

Colors shown are approximate and for reference only. For closest match see PMS colors, or for exact match, returnable samples and grommeted samples are available.

*Available in tall sizes

**Color not recommended for silk screening or heat transfer

Finished Measurements in Inches

Size	XS	S	M	L	XL	2XL	3XL	4XL	5XL	6XL
Chest	22.5	24	25.5	27	28.5	30	31.5	33	37	38.5
Length	26	26.5	27	27.5	28.5	29	30	30	32.5	33.5
Sleeve	33	34.5	36	36.5	37	39	39.5	40	42	42.5
Collar	4.25	4.25	4.25	4.25	4.25	4.25	4.25	4.25	4.25	4.25
Areas for Decoration	L/R Chest, Full Back			Port Pocket™			Left Underarm			

Collar measured center back seam to top hem. Chest width measured 1" below arm hole.

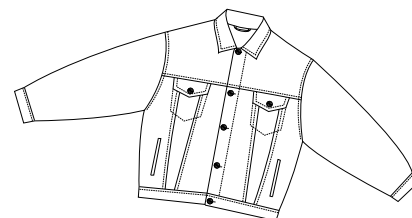
Body length measured from back neck seam to hem. Sleeve length measured from center back seam to hem.

Color Chart

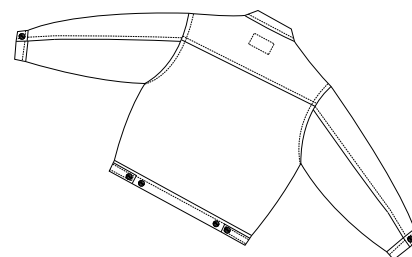
Colors	Goldenrod	Khaki	Maroon	Steel Gray	True Black	True Hunter	True Navy	True Red	True Royal
Textile PMS	14-0955TC	18-0617TC	19--1627TC	No Match	19-4005TC	19-5917TC	19-4025TC	19-1761TC	18-3949TC
General PMS	7408C	7531C	504C	432C	426C	5535C	533C	201C	2728C
Accent	Grey Heather	True Black	True Navy						
Textile PMS	No Match	19-4005TC	19-4025TC						
General PMS	No Match	Process Black	533C						

Authentic Denim Jacket

PORT AUTHORITY®



Front



Back

J762

- * 13.75-ounce * 100% cotton stonewashed denim * Flap chest pockets
- * Seamless back * Adjustable waist tabs

Care Instructions:

Machine wash cold, separately. Do not bleach. Tumble dry low. Remove promptly. Cool iron if necessary. Do not dry clean if printed.

Finished Measurements in Inches

Size	XS	S	M	L	XL	2XL	3XL	4XL
Length	26	26.5	27	27.5	28	28.5	29	29.5
Chest	22	23.5	25	26.5	28	29.5	31	32.5
Sleeve	32	34	35.5	36	36.5	37	37.5	38
Chest Pocket	5.25x6	5.25x6	5.25x6	5.25x6	5.5x6.12	5.5x6.12	5.5x6.12	5.5x6.12
Areas for Decoration	Left/Right Chest, Full Back			Port Pocket™		NA		

Chest width measured 1" below arm hole. Body length measured from back neck seam to hem.
Sleeve length measured from center back seam to hem. Chest pocket measured WxL.

Colors

Medium Blue

Please Note:

Colors shown are approximate and for reference only. For closest match see PMS colors, or for exact match, returnable samples and grommeted samples are available.

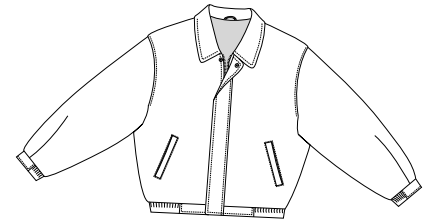
Also available in black.

Color Chart

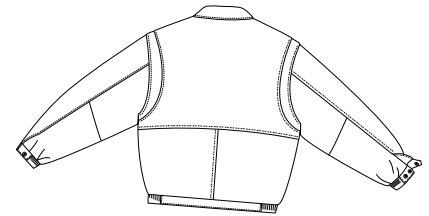
Color	Medium Blue
Textile PMS	No Match
General PMS	No Match

Leather Bomber Jacket

PORT | AUTHORITY®
SIGNATURE



Front



Back

J780

- * Action back (pleated folds in upper back) * Top grain leather
- * Fully lined with quilted nylon * Storm placket covers front zipper and snaps * Elastic waist
- * Elastic cuffed sleeves are adjustable with snaps * Inside and outside pockets

Care Instructions:

Dry clean by
leather specialist.

Finished Measurements in Inches

Size	XS	S	M	L	XL	2XL	3XL	4XL
Length	25	25.5	26	26.5	28	28.5	29.5	30
Chest	22.5	24	25.5	27	28.5	30	31.52	33
Sleeve	32	34	36	37	38	38.5	39	39.5
Areas for Decoration	Left Chest		Port Pocket™		inside left zipper flap			

Chest width measured 1" below arm hole. Body length measured from center back neck seam to hem.
Sleeve length measured from center back seam to hem.

Colors

Black

Please Note:

Colors shown are approximate and for reference only. For closest match see PMS colors, or for exact match, returnable samples and grommeted samples are available.

Color Chart

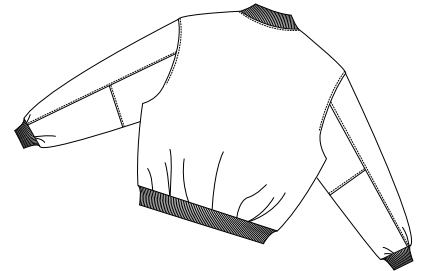
Base Color	Black
Textile PMS	No Match
General PMS	Black Hexachrome C

Wool and Leather Letterman Jacket

PORT AUTHORITY®



Front



Back

J783

- * 24-ounce Melton wool body * 100% genuine leather sleeves
- * Diamond quilted nylon lining on body and sleeves * Knit collar/cuffs/bottom hem
- * Snap front closure * Locker loop * Slash pockets with leather trim * Inside chest pocket

Care Instructions:

Dry clean by leather specialist.

Finished Measurements in Inches

Size	XS	S	M	L	XL	2XL	3XL	4XL
Length	25	25.5	26	26.5	28	28.5	29.5	30
Chest	22.5	23.5	25	26.5	28	29.5	31	32.5
Sleeve	33	34.5	36.5	37.5	38.5	39	39.5	40
Collar Height	2	2	2	2	2	2	2	3
Areas for Decoration	Left Chest		Port Pocket™			Yolk Seam, Left Zipper Flap		

Collar measured from center back neck seam to top hem. Chest width measured 1" below arm hole.
Body length measured from center back neck seam to hem. Sleeve length measured from center back seam to hem.

Colors

Black/Black

Please Note:

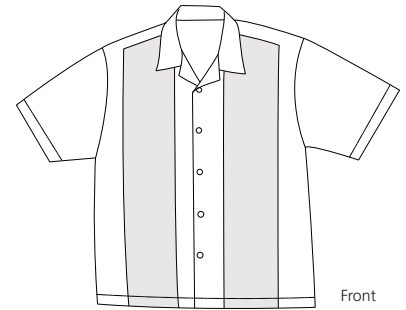
Colors shown are approximate and for reference only. For closest match see PMS colors, or for exact match, returnable samples and grommeted samples are available.

Color Chart

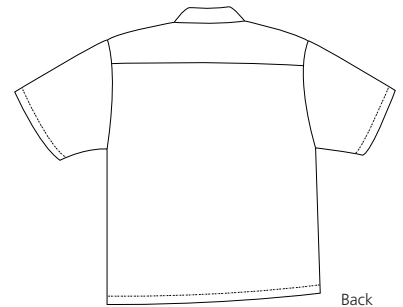
Jacket Colors	Black
Textile PMS	19-4006TC
General PMS	Process Black

Retro Camp Shirt

PORT AUTHORITY®



Front



Back

S300

- * 4.5-ounce * 55/45 cotton/polyester peached twill * Easy care * Straight bottom hem
- * Side vents * Dyed-to-match buttons

Care Instructions:






Machine wash warm with like colors.
Only non-chlorine bleach when needed.
Tumble dry low. Warm iron if necessary

Finished Measurements in Inches

Size	XS	S	M	L	XL	2XL	3XL	4XL
Chest	20	21.5	23	24.5	26	27.5	30.5	33.5
Body	25.5	27.5	29.5	30.5	31.5	32.5	33.5	34
Sleeve	8.75	9.75	10.75	11.25	11.75	12.25	12.75	13.25

Chest width measured 1" below arm hole. Body length measured from back neck seam to hem.
Sleeve length measured from shoulder seam to hem.

Colors

	Black/Burgundy
	Black/Light Stone
	Black/Navy
	Black/Red
	Black/Royal

Please Note:

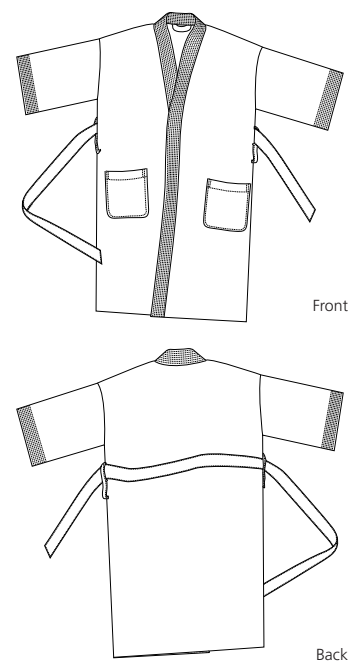
Colors shown are approximate and for reference only. For closest match see PMS colors, or for exact match, returnable samples and grommited samples are available.

Color Chart

Base Color	Black				
Textile PMS	19-4203TC				
General PMS	Process Black				
Stripe Colors	Burgundy	Light Stone	Navy	Red	Royal
Textile PMS	19-1617TC	13-0905TC	19-3920TC	19-1762TC	19-3952TC
General PMS	505C	7527C	533C	201C	661C

Terry Velour Robe

PORT AUTHORITY®



R100

- * 12 oz * 100% cotton terry velour * 2 patch-style hip pockets * 3/4 length sleeves
- * Belt with loops for size adjustment * One size fits most

Finished Measurements in Inches

Chest	28"
Length	48"
Sleeve	13.5"
Pocket	7.25"w x 7.5"h each (x2)
Belt Size and Placement	78"l x 2"w, 26.5/29.5" from bottom hem
Sleeve/Cuff Opening	10.25"
Placket Width	2"

Chest width measured at armhole, placket overlapped. Length measured from center back collar seam to bottom hem.
Sleeve measured from shoulder seam to hem. Belt placement measured from the bottom of second/first loop to bottom hem.

Colors

Navy
Pink
White

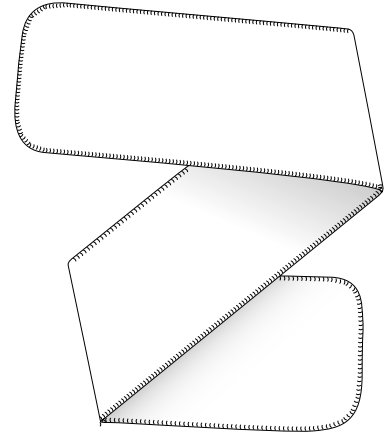
Please Note:
Colors shown are approximate and for reference only. For closest match see PMS colors, or for exact match, returnable samples and grommited samples are available.

Color Chart

Bag Color	Navy	Pink	White
Textile PMS	19-3920TC	13-2006TC	11-0601TC
General PMS	532C	496C	No Match

R-Tek™ Fleece Scarf

PORT AUTHORITY®














FS01

* 13-ounce R-Tek™ Fleece * Anti-pill finish * Contrasting blanket stitch for added style

Finished Measurements in Inches

Scarf Size	56" x 10"
------------	-----------

Colors

	Athletic Gold
	Black
	Dark Green
	Light Pink
	Maroon
	Midnight Heather
	Navy
	Orange
	Purple
	Red
	Royal

Please Note:

Colors shown are approximate and for reference only. For closest match see PMS colors, or for exact match, returnable samples and grommeted samples are available.

Color Chart

Colors	Athletic Gold	Black	Dark Green	Light Pink	Maroon	Midnight Heather
Textile PMS	15-1054TC	19-4007TC	19-5320TC	13-2006TC	19-1528TC	No Match
General PMS	143C	Process Black	5535C	496C	504C	No Match
Colors	Navy	Orange	Purple	Red	Royal	
Textile PMS	19-3920TC	17-1456TC	19-3731TC	19-1656TC	19-3952TC	
General PMS	533C	172C	669C	202C	661C	



STYLE# 3810
BEANIE



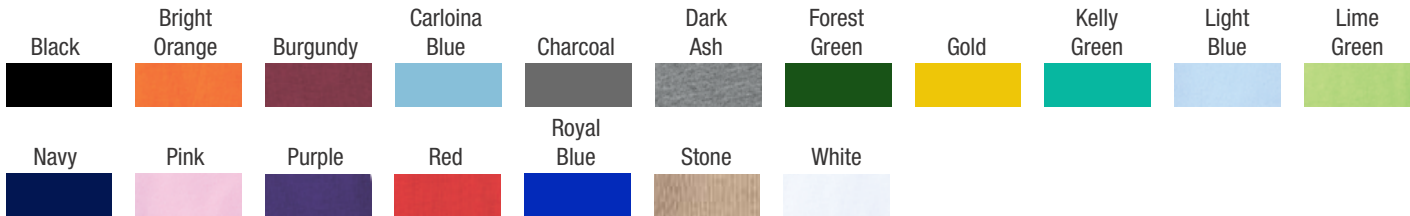
SIZES: One Size Fits All
Made in USA

Key Features:

- 100% Acrylic knit beanie
- Approx. 8 1/2" long

Care Instructions:

Spot Clean/Hand Wash



Reference Catalog Page: #46

Bayside Product Specifications:

Front	OSFA
IMPRINT AREA	4" W x 3" H





STYLE# 3630
UNSTRUCTURED WASHED
TWILL CAP



SIZES: One Size Fits All
Made in USA

Key Features:

- 100% Cotton unstructured
- Classic cut washed cotton chino twill cap
- 6 panel soft crown
- Adjustable self strap with hide-away side buckle
- Pre-curved bill
- American Flag

Care Instructions:

Spot Clean/Hand Wash



Reference Catalog Page: #43

Bayside Product Specifications:

Front	OSFA
IMPRINT AREA	2 1/4"H x 4"W





**STYLE# 800
PROMOTIONAL TOTE**



**SPECS: 12.5 W X 13.5 H
IMPRINT AREA: 10 W x 10 H
Made in USA**

Key Features:

- Promotional tote
- 7 oz. twill fabric
- 65/35 poly/cotton with 100% cotton natural web handles (reinforced at stress points)

Care Instructions:

Machine wash cold with like colors. Only non-chlorine bleach when needed. Tumble dry low. Cool iron if needed.



Reference Catalog Page: #52

Bayside Product Specifications:

	OSFA
WIDTH	12.5
HEIGHT	13.5
IMPRINT AREA	10" W x 10" H



Messenger Bag

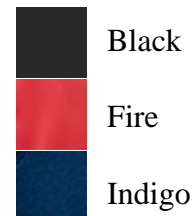


NEW OGIO® - Jack Pack Messenger Bag. 711203

Teetering between serious work and serious play, the Jack Pack offers up ingenious features including a camouflaged yet accessible airline ticket pocket, an oversized and padded laptop sleeve, and added zippered pockets for superior organization.

- Made from 600 denier poly/420 diamond dobby nylon
- Padded drop-in laptop sleeve
- Pullman handle attachment sleeve
- Business card pocket
- Rubber molded handle
- Organizer panel
- Fits most 15" laptops
- Dimensions: 14"h x 17"w x 5"d; 1,050 cubic inches

Colors



Fugitive



True Royal



Black

711113

- *Double lined entry pack
- *Internal padded laptop sleeve
- *Integrated shoulder harness with neoprene grab handle
- *Fleece lined top drop-in audio pocket with headphone exit port
- *Side mesh water bottle pockets
- *Dual side compression straps
- *Fits most 15" laptops

Please Note: Colors shown are approximate and for reference only. For closest match see PMS colors, or for exact match, returnable samples are available.

Measurements (in Inches)					
Approx. Dimensions		19"h x 12"w x 10"d			
Volume in Cu. In/Liters		2050 Cu.In/33.6 L			
Laptop Sleeve		12.5"h x 10.25"w x 2.5"d			
Material		300x900 rhinoskin poly/ 600D poly			
Color Chart					
Colors	Black(03)	Petrol(39)	True Royal		
PMS	Black	425	293 c		

Decoration Area					
	Loc 1	Loc 2	Loc 3	Loc 4	Loc 5
Embroidery	3.75" diam				
Screen	4" x 4"				
Description	Front Pocket				



**STYLE# 2115
WAIST APRON**



**SPECS: 11 W X 20 H
IMPRINT AREA: 6 W x 17 H
Made in USA**

Key Features:

- Waist apron
- 7 oz. twill stain resistant visa fabric
- 65/35 poly/cotton
- Three pockets
- Binding trim
- Extra long ties

Care Instructions:

Machine wash cold with like colors. Only non-chlorine bleach when needed. Tumble dry low. Cool iron if needed.



Reference Catalog Page: #50

Bayside Product Specifications:

	OSFA
WIDTH	11
HEIGHT	20
IMPRINT AREA	6" W x 17" H





(1) Local 632 Bug
Yellow and Blue Thread
(3.25" x 2.95" or 10" x 9")



(2) Local 632 Bug
Gold and Blue Thread
(3.25" x 2.95" or 10" x 9")



(3) Backstage 632 Bug
Dark and Medium Grey
(3.25" x 2.95" or 10" x 9")



(4) Golden Bug
(3.25" x 2.95" or 10" x 9")

**Proudly Serving
Bergen, Passaic, Morris
Warren, Hunterdon, Sussex,
Hudson, & Essex Counties
Since 1926**

(5) "Proudly serving..."
(3.75" x 2")



(6) Flat Northern New Jersey
(3/8" tall, each line)



(7) Stagehands
(3/8" tall)



(8) Projectionists
(3/8" tall)



(9) Wardrobe
(3/8" tall)



(10) Curved Northern NJ
(3/8" tall)



(11) American Flag
(2.75" x 1.6")

We Support Our Troops

(12) "We Support Our Troops"
(3/8" x 4.5")

UNION PROUD

(13) Union Proud
(7/16" x 4")

UNION STRONG

(14) Union Strong
(7/16" x 4")

CREW

(15) CREW
(5/8" x 3.25")

- The curved wording is meant to go over any of the Local 632 bug options. If the bug selected with one of these options has blue thread, then the curved lettering will be in blue as well, smoke grey for the backstage bug, and gold with the Golden Bug. If this curved text is wanted on its own, for the top of a sleeve or something, please note the color desired.
- "Proudly Serving..." and the flat Northern New Jersey will follow the same lettering color as the curved options when they are embroidered on the same garment as a bug.
- We support our troops, UNION PROUD, UNION STRONG, and CREW are all meant to be stand alone things to be embroidered on the sleeve, right breast, or another place. These things will have the option of being embroidered in Yellow, Gold, Blue, Black or Smoke Grey.
- All names, or other custom lines of text, being embroidered on a garment can be placed anywhere you would like it. These things will also have the option of being embroidered in Yellow, Gold, Blue, or Grey. Any custom work like this can be in either a Script or a Block font.
- The small logo can go either on the left chest, the left sleeve, or on the back below the collar on shirts and jackets. If you have any other ideas for where a logo should go, just ask. This is being made for you.
- **Caution**, prices may be subject to change. Please make sure your phone number is correct at the top of the order. You will be called to verify any changes, if there are any, before your order is processed.
- If you want different names on different items, please use more than one order form and note the pages as going together (Page 1 of 3, for example). If your order can't seem to fit on an order form, you can feel free to attach a note with specifics for that garment. Please write "See Note" on the order form if you do this.
- You can also write your order in an email. And send it to IA632_swag@soundsqueege.com.
- And please double check your spelling! No refunds will be given because you provided incorrect information for you embroidery.